

신종 코로나바이러스감염증 예방 수칙

감염병 예방 수칙



손바닥, 손톱 밑
비누로 꼼꼼하게 손씻기!



기침할 땐
옷소매로 가리기!



기침 등 호흡기 증상자는
의료기관 방문 시
반드시 마스크 착용



선별진료소 및 의료기관
방문 시 의료진에게
해외여행력 알리기



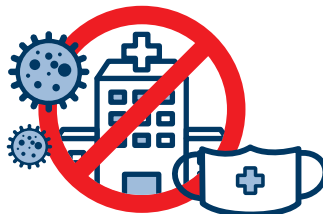
감염병 의심될 땐
관할보건소 또는 1339 상담

*선별진료소 안내 : 관할 보건소 및 지역번호 +120

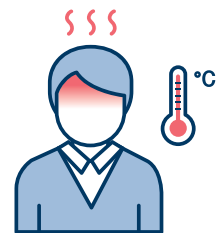
중국 여행 시 주의사항



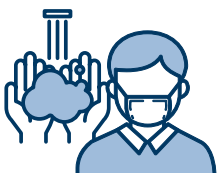
동물(가금류 포함) 접촉 금지



현지 시장 및 의료기관 방문 자제



발열, 호흡기 증상자(기침, 인후통 등)
접촉 금지



· 기침시 마스크 착용
· 손씻기, 기침예절 등
개인위생 수칙 준수



· 중국 여행 후 입국 시 건강상태질문서 제출
· 귀국 후 발열과 호흡기 증상(기침, 인후통 등)
발생 시 관할보건소 또는 1339 상담

新型冠状病毒感染症预防守则

传染病预防守则



仔细清洗手掌、
手指甲底部!



咳嗽时
用衣袖遮掩!



有咳嗽等呼吸道症状者
到访医疗机构时
必须佩戴口罩



到访医疗机构时,
告知医务人员
海外旅行经历



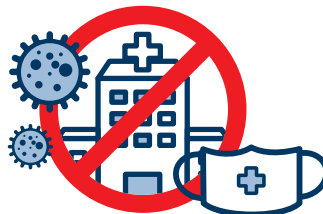
질병관리본부 콜센터

疑似为传染病时,
拨打疾病管理本部呼叫中心电话
1339进行咨询

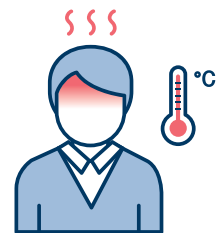
前往中国疫情发生地区旅行时的注意事项



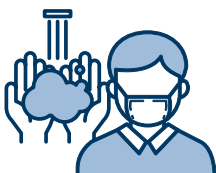
禁止接触动物
(包括家禽)



尽量不要到访当地市场及医疗机构



禁止接触有发热、
呼吸道症状者
(咳嗽、呼吸困难等)



• 咳嗽时佩戴口罩
• 洗手、咳嗽礼仪等
遵守个人卫生守则



• 前往中国疫情发生地区旅行后入境时, 提交健康状况询问表
• 回国后14日以内出现发热和呼吸道症状 (咳嗽、呼吸困难等) 时,
拨打疾病管理本部呼叫中心电话1339或向保健所进行咨询

Recommendations for preventing novel coronavirus infection

Recommendations for preventing infectious diseases



Wash your hands with soap and water
especially your palms and under your fingernails



Cover your mouth with your sleeve
when **coughing!**



Wear a mask
when **visiting health facilities with respiratory symptoms**
(coughing, etc)



Inform your travel history to medical staff
when visiting health facilities

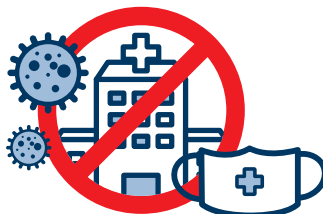


Please consult with the
KCDC call center at 1339
if you are suspicious of contracting an infectious disease

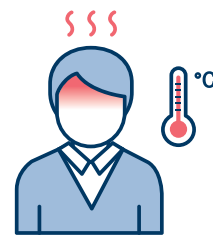
Recommendations when travelling to affected area in China



Do not touch animals
(including poultry)



Avoid visiting to local markets and health facilities



Do not contact with people who have a fever or respiratory symptoms
(coughing, difficulty in breathing, etc.)



- **Wear a mask when coughing**
 - **Cover your mouth with your sleeve when coughing**
- Comply with personal hygiene recommendations**



- **Report the health questionnaire upon arrival, after travelling to infected regions in China**
- **If you have a fever and respiratory symptoms within 14 days of returning to home**
Please consult with the KCDC call center at 1339 or public health center